

# Temp1000IS

## Intrinsically Safe Temperature Data Logger



The Temp1000IS is an Intrinsically Safe temperature data logger. It carries hazardous location, intrinsically safe certification in accordance with the latest issue of FM3600, FM3610. This certification makes the device ideal for EtO Sterilization, environmental studies, and numerous other hostile environment applications.

The device can be started and stopped directly from your computer and its small, sleek size allows it to fit almost anywhere. The Temp1000IS makes data retrieval quick and easy. Simply insert the device into the IFC400 or the IFC406 USB docking station (sold separately) and our user-friendly software does the rest. The small size of the Temp1000IS, allows it to be placed in remote or hard to reach locations. The device features a battery life indicator allowing users to easily identify low voltage and change batteries when required. This feature maximizes the use of your battery life and is a cost saving efficiency.

The MadgeTech Software is a powerful, analytic tool, available to download for free from our website [madgetech.com](http://madgetech.com). Data can be viewed in graphical or tabular formats and summary and statistics views are available for further analysis.

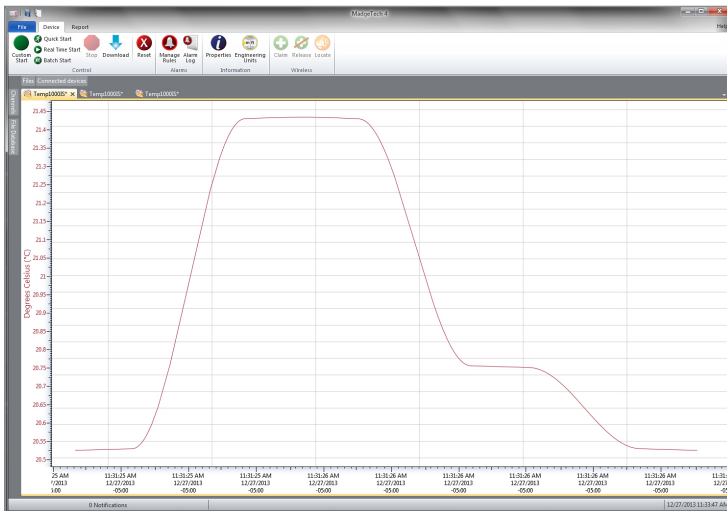
### Features

- Rugged
- Reusable
- Programmable Start Time
- 316 Stainless Steel Enclosure
- User-friendly
- Low Cost
- CE Compliant
- Optional Key Ring End Cap

### Certified Intrinsically Safe

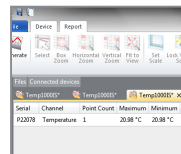
- Class I, II, III, Division 1, Groups A-G,  $-40^{\circ}\text{C} < T_{\text{amb}} < +80^{\circ}\text{C}$ , T4A
- Class I, II, III, Division 2, Groups A-D, F, G,  $-40^{\circ}\text{C} < T_{\text{amb}} < +80^{\circ}\text{C}$ , T4A
- Temperature Class: T4A
- CAN/CSA-C22.2 No. 60079-0:15
- CAN/CSA-C22.2 No. 60079-11:14

### MadgeTech 4 Software Features

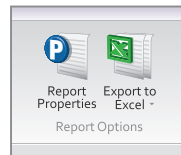


Graph View

- Multiple graph overlay
- Statistics
- Digital calibration
- Zoom in/ zoom out
- Lethality equations (F0, PU)
- Mean Kinetic Temperature
- Full time zone support
- Data annotation
- Min./Max./Average lines
- Summary view



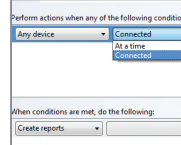
Statistics



Export to Excel

Time	Time Zone	Data
1:13:37 PM	-04:00	-05:00:00
1:14:37 PM	-04:00	-05:00:00
1:15:37 PM	-04:00	-05:00:00
1:16:37 PM	-04:00	-05:00:00
1:17:37 PM	-04:00	-05:00:00
1:18:37 PM	-04:00	-05:00:00
1:19:37 PM	-04:00	-05:00:00
1:20:37 PM	-04:00	-05:00:00
1:21:37 PM	-04:00	-05:00:00
1:22:37 PM	-04:00	-05:00:00
1:23:37 PM	-04:00	-05:00:00
1:24:37 PM	-04:00	-05:00:00
1:25:37 PM	-04:00	-05:00:00
1:26:37 PM	-04:00	-05:00:00
1:27:37 PM	-04:00	-05:00:00
1:28:37 PM	-04:00	-05:00:00

Tabular Data View



Automation

### Benefits

- Simple Setup and Installation
- Minimal Long-Term Maintenance
- Long-Term Field Deployment

### Applications

- EtO Sterilization
- Implement HACCP Programs
- Food Preparation and Processing
- Environmental Studies
- Well Monitoring
- Dishwasher Testing
- Hazardous and Hostile Environment Monitoring
- Medical and Pharmaceutical

## SPECIFICATIONS

Specifications are subject to change without notice. Specific warranty remedy limitations apply. Call (603) 456-2011 or go to [madgetech.com](http://madgetech.com) for details.

TEMPERATURE		Software Compatibility	Standard Software version 4.2.19.1 or later Secure Software version 4.2.18.0 or later
Temperature Sensor	Resistance Temperature Detector (RTD)	Operating Environment	-40 °C to +80 °C (-40 °F to +176 °F) 0 %RH to 100 %RH (case properly sealed)
Temperature Range	-40 °C to +80 °C (-40 °F to +176 °F)	Dimensions	<b>Without Key Ring:</b> 1 inch probe: 2.66 in x 0.97 in dia. (67.6 mm x 24.6 mm dia.) 2 inch probe: 3.94 in x 0.97 in dia. (100.1 mm x 24.6 mm dia.) 5.25 inch probe: 7.19 in x 0.97 in dia. (182.6 mm x 24.6 mm dia.) 7 inch probe: 8.94 in x 0.97 in dia. (227.1 mm x 24.6 mm dia.) <b>With Key Ring:</b> 1 inch probe: 2.97 in x 0.97 in dia. (75.4 mm x 24.6 mm dia.) 2 inch probe: 4.26 in x 0.97 in dia. (108.3 mm x 24.6 mm dia.) 5.25 inch probe: 7.52 in x 0.97 in dia. (200.0 mm x 24.6 mm dia.) 7 inch probe: 9.26 in x 0.97 in dia. (235.1 mm x 24.6 mm dia.)
Temperature Resolution	0.01 °C (0.018 °F)		Weight
Calibrated Accuracy	±0.5 °C (0 °C to ±55 °C), ±0.9 °F (32 °F to 131 °F)	Material	
GENERAL		IP Rating	IP68
Start Modes	Software programmable immediate start or delay start up to 24 months in advance	Approvals	CE FM Class 3600, latest revision FM Class 3610, latest revision CAN/CSA-C22.2 No. 60079-0:15 CAN/CSA-C22.2 No. 60079-11:14
Real Time Recording	May be used with PC to monitor and record data in real time		Operating System Compatibility
Password Protection	Yes		
Memory	65,280 Readings		
Wrap Around	Yes		
Reading Rate	1 reading every second up to 1 reading every 24 hours		
Calibration	Digital calibration through software		
Calibration Date	Automatically recorded within device and displayed in software		
Battery Type	Tadiran TL-2150/S 3.6V lithium battery included, user replaceable in a non-hazardous location		
Battery Life	2 years typical at 15 minute reading rate		
Time Accuracy	1 minute/month at 25 °C		
Data Format	Date and time stamped °C, °F, K, °R		
Computer Interface	IFC400 or IFC406		

**BATTERY WARNING:** FIRE, EXPLOSION, AND SEVERE BURN HAZARD. DO NOT SHORT CIRCUIT, CHARGE, FORCE OVER DISCHARGE, DISASSEMBLE, CRUSH, PENETRATE OR INCINERATE. BATTERY MAY LEAK OR EXPLODE IF HEATED ABOVE 80 °C (176 °F).

## Ordering Information

Temp1000IS-1	PN 902214-00	Intrinsically Safe Temperature Data Logger with 1 inch probe
Temp1000IS-2	PN 902215-00	Intrinsically Safe Temperature Data Logger with 2 inch probe
Temp1000IS-5.25	PN 902216-00	Intrinsically Safe Temperature Data Logger with 2.25 inch probe
Temp1000IS-7	PN 902217-00	Intrinsically Safe Temperature Data Logger with 7 inch probe
Temp1000IS-1-KR	PN 902219-00	Intrinsically Safe Temperature Data Logger with 1 inch probe and key ring end cap
Temp1000IS-2-KR	PN 902220-00	Intrinsically Safe Temperature Data Logger with 2 inch probe and key ring end cap
Temp1000IS-5.25-KR	PN 902221-00	Intrinsically Safe Temperature Data Logger with 5.25 inch probe and key ring end cap
Temp1000IS-7-KR	PN 902222-00	Intrinsically Safe Temperature Data Logger with 7 inch probe and key ring end cap
IFC400	PN 900319-00	Docking station with USB cable
IFC406	PN 900325-00	6 Port, Multiplexer docking station with USB cable
TL-2150/S	PN 901745-00	Replacement battery for the Temp1000IS and Temp1000IS-KR